

To: Jim Lowers, Chair
Mitch Drake, Interim CEO
Golden Bear LLC (GBB)

From: Tom West, UCCC and NECCC Consortia Manager

Subject: **Response to Comcast Communications' Challenge to the GBB
Application for a CASF Infrastructure Program Grant**

Date: April 1, 2013

You requested assistance in responding to Comcast Communications' challenge to the Golden Bear Broadband grant application. The following summarizes our:

- attempts to engage Comcast in the development of the Northern California Regional Middle-Mile Infrastructure (NCRMMI) plan and participation in the formation of Golden Bear Broadband, LLC;
- analysis of Comcast's infrastructure deployment;
- analysis of Comcast's current services to communities of the six (6) counties it serves in relation to the proposed NCRMMI that will serve all 16 counties; and,
- feedback and concerns from constituents about differences between what Comcast and other providers advertise and CPUC publishes and what they actually experience or perceive.

The Comcast Challenge

Comcast provided the CASF with information as to the number of households passed by Comcast in the CBGs it was challenging. Comcast stated that these CBGs (i) are not "under-served" and (ii) should not be eligible for CASF funding. If, however, funding for portions of the CBGs is actually being requested in the GBB application, Comcast will work with the CASF staff to provide census block data for partial CBGs.

Comcast pointed out that it had previously submitted NTIA Broadband Data stating its Maximum Advertised Upload Speed is Tier 8 (greater than 25 Mbps and less than 50 Mbps) and its Maximum Advertised Download Speed is Tier 10 (greater than 100 Mbps and less than 1 Gbps).

In essence, Comcast is claiming the implementation of NCRMMI as a “regional middle infrastructure” is not needed in the territories where Comcast is currently providing “last mile” services.

Background and Context of NCRMMI

The FY 2012 Work Plan of the Upstate California Connect Consortium (UCCC) and the Northeastern California Connect Consortium (NECCC) focused on:

- developing the Northern California Regional Middle-Mile Infrastructure (NCRMMI) plan; and,
- facilitating the formation of Golden Bear Broadband LLC (GBB) to implement, own, manage, and operate the NCRMMI.

***NOTE:** The responses to the Frontier and the AT&T challenges contain the narrative providing the background and context for the two Work Plan foci.*

Based on the work of the NECCC and UCCC Consortia during FY 2012, the 16 Northern California counties still lack a comprehensive, integrated, open-access, regional middle-mile broadband infrastructure to meet their current needs let alone future.

The NCRMMI has been designed to provide a robust network infrastructure across these 16 counties that will meet current broadband needs as well as provide growth capacity for the next 20 to 30 years. This infrastructure will bring next-generation services that will promote: 1) economic growth of businesses and industry; 2) enhanced educational services; 3) access to increased library services and resources; 4) improved access to quality healthcare; 5) interoperability of public safety services; 6) online access to all levels of government services; and 7) provide each citizen the opportunity to avail themselves of the wide range of information resources and services they deem appropriate to improve their quality of life.

From the outset our goals and strategies for NCRMMI have been to:

1. Goals

- Develop a reliable, diverse, integrated and secure network architecture;
- Integrate and connect with each of the county-wide backbone systems;
- Provide anchor institutions (education, health delivery facilities, libraries and public safety) fiber access to NCRMMI directly or via the county-wide backbone systems;
- Provide last-mile access by businesses, government agencies and residents via county-wide backbone systems; and

- Provide access by Commercial Last-Mile Internet providers via direct connection or cell towers.

2. *Strategies*

- Utilize existing fiber wherever possible;
- Utilize other existing resources when possible (conduits, poles, colocation, etc.);
- Deploy as much fiber underground as is cost-effective;
- Deploy equipment for regeneration and access is designed to balance costs while providing future expanding access location needs;
- Pass through as many Incorporated Communities and Census Designated Places as feasible;
- Connect as many Anchor Institutions directly via fiber, as feasible;
- Connect Cell Towers to NCRMMI via fiber; and,
- **Partner with “last mile” providers to serve as many households as possible.**

To this last strategy, since NCRMMI is a regional middle-mile infrastructure with GBB as “wholesale provider” and Comcast is a “last mile” provider to households. The UCCC/NECCC believes Comcast should view GBB’s NCRMMI as being complementary and a benefit to its “last mile” services and not a threat.

Attempts to Engage Comcast Communications

In FY 2012 Cathy Emerson, representing UCCC/NECCC, on separate occasions, spoke with Philip Arndt and Troy Walton, both Comcast Communications representatives. She shared with them our mission, goals and intent to develop plan for NCRMMI and to facilitate the formation of Golden Bear Broadband, LLC to pursue a grant to build and then own, manage and operate this regional middle-mile infrastructure to serve the 16 rural counties. When she asked if Comcast would be interested in participating in this endeavor, she was told that Comcast, as a private company, did not take federal or state grant funds, operates a closed system network, and did not participate in such collaborative endeavors. Consequently, we no longer pursued Comcast’s involvement in our planning efforts.

However, we did keep in mind the fact that Comcast provides “last mile” services to households in communities in six (6) (Butte, Colusa, Glenn, Mendocino, Sonoma and Yolo) of the 16 counties that NCRMMI passes through.

Comcast’s Infrastructure Deployment

We have been told that for competitive reasons Comcast does not share any information about its deployed infrastructure. Therefore, UCCC/NECCC does not have firsthand knowledge as to whether or not Comcast owns and manages any middle-mile fiber

routes. Even if it does, we understand that Comcast would not make any fiber on them available to any party to be used as part a collaborative project like NCRMMI.

Based on **Figure 1.0**, we know Comcast has infrastructure deployed in the communities it serves in the six counties. However, we do not know the type (coax and/or fiber) and the extent of deployment in each community.

As depicted on **Figure 1.0**, it appears each Comcast community is an island unto itself. We are not aware that Comcast owns and manages its long-haul middle-mile infrastructure interconnecting the counties and communities within the counties it services.

We have assumed Comcast acquires most, if not all, of its back-haul transport services from other providers. We do not know whether or not Comcast has acquired diverse and redundant back-haul capabilities to each of the communities it serves. However, the recent Suddenlink experience in Humboldt County of four major disruptions as a result of vandalism suggests the importance of redundancy. The deployment of NCRMMI can help address the redundancy issue.

Comcast’s Advertised Services to Communities in Northern California

Table 1.0 provides pertinent demographic information about each of the 16 counties including: population, number of Incorporated Communities and Census Designated Places, number of households, median household income, percentage of persons below poverty, percentage of unemployment, and number of firms. The counties in which Comcast offers services are highlighted.

Based on the CPUC Round 6 Availability Report data **Table 2.0** provides a breakout by county of the number of households that are served, underserved and unserved. The counties in which Comcast offers services are highlighted.

The Fixed Wireless service buffer that extends up to eight (8) miles on either side of the NCRMMI regional middle-mile fiber path was included to provide “last mile” Internet Service Providers that might partner with GBB to provide greater broadband speed to underserved and unserved households.

Figure 1.0 shows the NCRMMI buffer area in the six counties. The blue line shows the CBGs that Comcast Communications claims are impacting their services. However, when the detailed CPUC data are analyzed the red highlighted area is the area where Comcast services are really accessible. **Figure 2.0 thru Figure 5.0** provide more detailed views of the specific counties.

Table 3.0 shows there are 283,897 households within the NCRMMI footprint. Comcast claims to pass by 257,822, or 90.8 percent, of these households. This means there are 26,075 potential households yet to be reached. **EXHIBIT #1** provides detail by CBG.

Table 3.0 Comcast Challenge CBGs by Households served at 6 Mbps and 1.5 Mbps up

COMCAST	Households in GBB Footprint	Households "Served" (100dn & 25up) by Comcast	Percent Served by Comcast	Number of CBGs	Number of CBGs Served 100% by Comcast	Percent
CBGs in Butte County	75,974	69,915	92.0%	180	94	52.2%
CBGs in Colusa County	6,764	4,214	62.3%	19	2	10.5%
CBGs in Glenn County	8,499	5,903	69.5%	19	0	0.0%
CBGs in Mendocino County	25,591	21,961	85.8%	60	10	16.7%
CBGs in Sonoma County	135,715	129,694	95.6%	305	158	51.8%
CBGs in Tehama County	4,524	0	0.0%	9	0	0.0%
CBGs in Yolo County	26,830	26,135	97.4%	45	30	66.7%
Total	283,897	257,822	90.8%	637	294	46.2%

It needs to be noted that there are no public data to indicate how many accessible households actually acquire and utilize Comcast's broadband services.

It also begs the question: 1) How many Comcast household customers actually have 100 mbps/25 mbps service?

In essence, as a regional middle-mile provider GBB would work with “last mile” providers in these six counties, including Comcast Communications, to ensure that every household has access to the quantity and quality of broadband capabilities they will need in the future.

Constituent Feedback and Concerns

We have had feedback and concerns expressed about the services of Comcast, and other providers, from constituents in all six counties. However, the most proactive and focused feedback and concerns have come from the Broadband Alliance of Mendocino County (BAMC) and the leadership of the Sonoma Connect Committee (SCC). These two groups, comprised of citizen volunteers, have joined forces to work together to articulate and promote the broadband needs of these two counties.

Over the past year they have worked closely with the UCCC/NECCC staff on the overall development of the NCRMMI and specifically on the Route 1 Corridor component. We have held several in-person meetings and in recent months have had a weekly conference call. Both BAMC and SCC have endorsed the NCRMMI as the key to providing both counties the comprehensive and redundant middle mile backbone that is critical to the future growth and development of both counties. In fact, there were of 100 letters of support for the GBB from various groups and entities in Mendocino County.

The design of NCRMMI in both counties reflects their priority needs. The top priority is to have NCRMMI serve the communities along the coast in both counties, the Route 1 Corridor. Another priority is to enhance the redundancy and capacity of connectivity between the Japan Cable Landing in Manchester and the transcontinental fiber paths. This increase in redundancy and capacity is vital to national security issues.

BAMC was founded in FY 2010 to ensure that the county’s population has affordable access to broadband on their homes, businesses and public places to support economic viability, ensure health and safety and access to educational opportunities. It has worked diligently to bring broadband capabilities into the county.

However, BAMC believes the CPUC Availability Report data reflecting high percentages of the county as being served are highly misleading. One example. The Round 6 Availability Report declares that Comcast provides 100 Mbps/25 Mbps service to all of Brooktrails, a Census Designated Place. In fact, Comcast’s service is only available to a portion of Brooktrails.

Sonoma Connect Committee is still in the formative stages. It has evolved from efforts to bring broadband to the western side of Sonoma County and the need and desire to work closely with Mendocino County and also with Golden Bear on NCRMMI. Like BAMC, SCC has become aware of difference between the advertised speeds of the providers that



The Upstate California Connect Consortium
is composed of members from Colusa, Glenn, Lake, and Sonoma counties
and led by CENIC and the Center for Economic Development at CSU Chico.



end up in the CPUC Availability Reports. Another example. Residents on Joy Road have been told they have access to broadband speeds that exceed the CPUC standard of 6.0/1.5 Mbps. Here is a synopsis of a survey in process:

“Fully 34 respondents are shown as in an area covered by Comcast cable. Although this is true for 1 respondent out of the area and I need to check on 2 others on the fringe, 31 people show Comcast where there is no cable running near the properties and no plans to do so. In fact more of the addresses show Comcast than not according to your GIS database. As you know, cable requires a physical run to the residence and it just doesn't exist throughout the bulk of Joy Road Area.”

At a recent weekly meeting of the BAMC chair, Jim Moorehead reported on the statement he made recently to the California Broadband Council, chaired by Michael Peavy, Chair of the CPUC. Jim made three points:

“1) Deployment is still an issue, as the incumbents have declined to expand service despite repeated requests, 2) The current CPUC maps overstate the served areas of broadband significantly, and 3) the Route One Corridor Project is a key component of the Golden Bear Broadband application, and it needs to be approved. The incumbents are not willing to do the work, nor work with the Alliance, and with the challenges to the Golden Bear application we are “Damned if we do and damned if we don't!”

In the same BAMC meeting Scott Adams of Comcast was present. He was asked by the BAMC why Comcast challenged the GBB application. One of the BAMC members stated:

“He didn't understand Comcast's position challenging the Golden Bear application, and he would think that Comcast would support a middle mile project (an important distinction) because it would provide Comcast with more vendors from which to buy capacity from. Comcast complains that AT&T is “strangling us on these routes” so an alternative to AT&T makes sense, and the Golden Bear is not competing with Comcast for TV, so why is Comcast opposing it.

Scott responded:

“He was told by the regulatory person that the Golden Bear was such a huge project and that significant portions of the fiber ring went through and over Comcast footprint areas, and that the project didn't fit the definition of what the CASF grants are about. Scott also stated that Comcast is committed to being involved in the process and he was at the initial upstate broadband consortium and that although their participation has not been as much as we may have wanted they are committed to being part of the conversation and solution.”



The Upstate California Connect Consortium
is composed of members from Colusa, Glenn, Lake, and Sonoma counties
and led by CENIC and the Center for Economic Development at CSU Chico.



BAMC's concern about the reliability and validity of the CPUC Availability Report data has caused them to partner with the Mendocino County Office of Education to pursue a \$100,000 Caltrans Environmental Justice grant to undertake a number of broadband related activities including: **Mapping actual existing broadband service levels and cost.** This is because BAMC does not have confidence in the CPUC data. To demonstrate its concern about the validity of the Comcast reported data over this past weekend BAMC reached out to citizens in the Albion area, where Comcast claims it provides comprehensive coverage, asking whether or not they had access to Comcast service. **EXHIBIT #2** provides the email responses suggesting that the CPUC data are overstated.

Summary Statement

The challenge by Comcast has missed the key point and the key message. The key point is that NCRMMI is the foundation to developing a full and complete broadband plan for Northern California. The key message is that for Comcast or any provider to be successful it must work with the leadership of the user community.

We believe the NCRMMI plan complements and benefits Comcast Communications as a "last mile" provider and we invite Comcast to work with UCCC/NECCC and GBB and each county group like BAMC and SCC to bring to the 1.634 million citizens, thousands of businesses and hundreds of anchor institutions in the 16 Northern California counties the broadband capabilities they will need to thrive for the long range future.

TABLES
FIGURES
EXHIBITS

cc: Jim Moorehead, Chair and Brian Churm, BAMC; Steve Sharpe and Mike Nicholls, Sonoma County Connect; and, Cathy Emerson, UCCC and NECCC

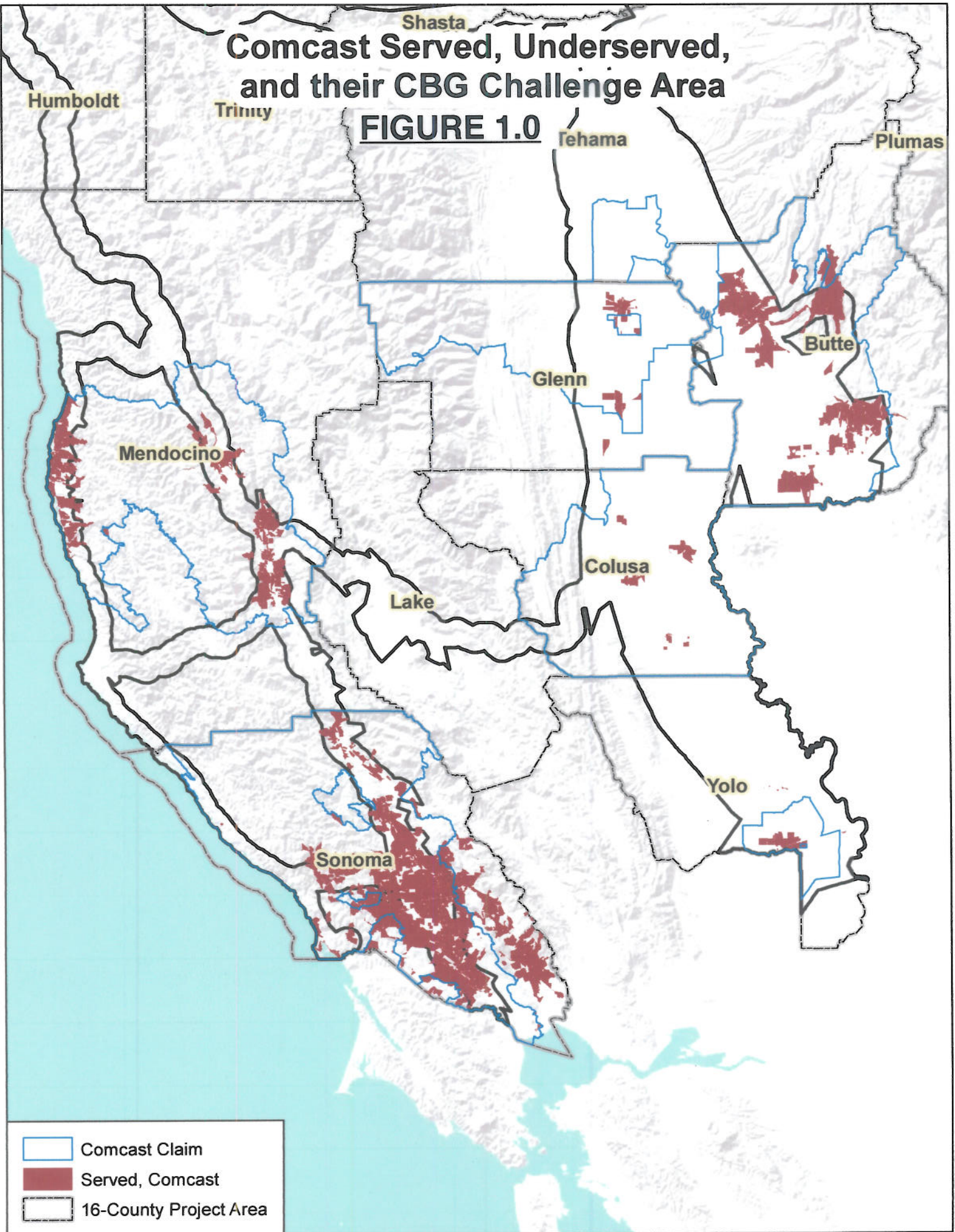


The Upstate California Connect Consortium
is composed of members from Colusa, Glenn, Lake, and Sonoma counties
and led by CENIC and the Center for Economic Development at CSU Chico.



Comcast Served, Underserved, and their CBG Challenge Area

FIGURE 1.0



**TABLE 1.0
NORTHERN CALIFORNIA COUNTIES: DEMOGRAPHICS**

NORTHERN CALIFORNIA BROADBAND PLAN																	
COUNTY	2000 Land Area (Acres)	2000 Land Area (Square Miles)	2000 Census Population	2010 Census Population	Percentage Change-2000 to 2010	2010- Persons per Square Mile	No. Incorporated Places	2010 Population of Incorporated Places	No. Designated Places	2010 Population of Designated Places	2010 Population of the Balance of County	Number of Households 2010	Median Household Income 2011	% of State Median 2011	% of Persons below Poverty 2011	% Annual Unemployment 2011	Number of Firms 2009
REDWOOD COAST CONNECT																	
DEL NORTE	644,990	1,008	27,507	28,610	4.01%	28.4	1	7,643	5	5,043	15,924	9,907	\$ 37,588	61.0%	21.2%	13.4%	1,733
HUMBOLDT	2,286,400	3,573	126,518	134,623	6.41%	37.7	7	62,707	28	45,771	26,145	56,031	\$ 40,376	65.5%	18.4%	11.3%	14,333
MENDOCINO	2,245,760	3,509	86,265	87,841	1.83%	25.0	4	28,685	19	15,163	43,993	34,945	\$ 44,527	72.2%	17.8%	10.9%	10,673
TRINITY	2,034,300	3,179	13,022	13,786	5.87%	4.3	-	-	12	10,472	3,314	6,083	\$ 37,672	61.1%	17.6%	17.8%	1,288
Sub-total	7,211,450	11,268	253,312	264,860	4.56%	23.5	12	99,035	64	76,449	89,376	106,966					28,027
% of State		7.22%	0.75%	0.71%				37.39%		28.86%	33.74%	0.85%					0.79%
NORTHEASTERN CALIFORNIA CONNECT																	
BUTTE	1,049,280	1,640	203,171	220,000	8.28%	134.2	5	136,242	25	54,635	29,123	87,618	\$ 42,971	69.7%	19.8%	13.6%	17,474
LASSEN	2,916,670	4,557	33,828	34,895	3.15%	7.7	1	17,947	12	6,828	10,120	10,058	\$ 52,484	85.2%	14.6%	13.5%	1,656
MODOC	2,524,220	3,944	9,449	9,686	2.51%	2.5	1	2,827	12	2,792	4,067	4,064	\$ 35,402	57.4%	19.8%	14.9%	732
PLUMAS	1,634,370	2,554	20,824	20,007	-3.92%	7.8	1	2,104	46	14,805	3,098	8,977	\$ 44,151	71.6%	17.2%	15.9%	2,431
SHASTA	2,422,530	3,785	163,256	177,223	8.56%	46.8	3	109,957	19	19,400	47,866	70,346	\$ 44,058	71.5%	18.4%	14.7%	15,798
SISKIYOU	4,023,550	6,287	44,301	44,900	1.35%	7.1	9	20,744	11	3,620	20,536	19,505	\$ 37,865	61.4%	20.6%	16.6%	4,558
TEHAMA	1,888,640	2,951	56,039	63,463	13.25%	21.5	3	22,157	14	9,992	31,314	23,767	\$ 38,753	62.9%	18.9%	15.0%	4,313
Sub-total	16,459,260	25,718	530,868	570,174	7.40%	22.2	23	311,978	139	112,072	146,124	224,335					46,962
% of State		16.49%	1.57%	1.53%				54.72%		19.66%	25.63%	1.78%					1.33%
UPSTATE CALIFORNIA CONNECT																	
COLUSA	736,450	1,151	18,804	21,419	13.91%	18.6	2	11,094	7	5,461	4,864	7,056	\$ 49,558	80.4%	14.4%	20.4%	1,352
GLENN	841,470	1,315	26,453	28,122	6.31%	21.4	2	13,457	3	2,217	12,448	9,800	\$ 43,239	70.2%	18.8%	15.8%	1,792
LAKE	805,120	1,258	58,309	64,665	10.90%	51.4	2	20,003	13	30,801	13,861	26,548	\$ 39,525	64.1%	21.4%	16.7%	5,164
SONOMA	1,008,580	1,576	458,614	483,878	5.51%	307.0	9	338,692	28	54,351	90,835	185,825	\$ 64,343	104.4%	10.7%	9.8%	53,446
Sub-total	3,391,620	5,299	562,180	598,084	6.39%	398	15	383,246	51	92,830	122,008	229,229					61,734
% of State		3.40%	1.66%	1.61%				64.08%		15.52%	20.40%	1.82%					1.75%
CONNECTED CAPITAL REGION																	
YOLO	648,510	1,013	168,660	200,849	19.09%	198.2	4	176,458	8	14,022	10,369	70,872	\$ 57,920	94.0%	15.7%	12.4%	14,841
Sub-total	648,510	1,013	168,660	200,849	19.09%	198.2	4	176,458	8	14,022	10,369	70,872					14,841
% of State		0.65%	0.50%	0.54%				87.86%		6.98%	5.16%	0.56%					0.42%
16-COUNTY TOTALS																	
STATE	27,710,840	43,298	1,515,020	1,633,967	7.85%	37.7	54	970,717	262	295,373	367,877	631,402	\$ 50,575	82.1%	16.3%	12.4%	151,564
COUNTRY	99,813,950	155,959	33,871,648	37,253,956	9.99%	238.9						12,577,498	\$ 61,632	100.0%	14.4%	11.7%	3,532,132
Region % of State		27.76%	4.47%	4.39%								5.02%	82.06%	113.19%	105.98%		4.29%

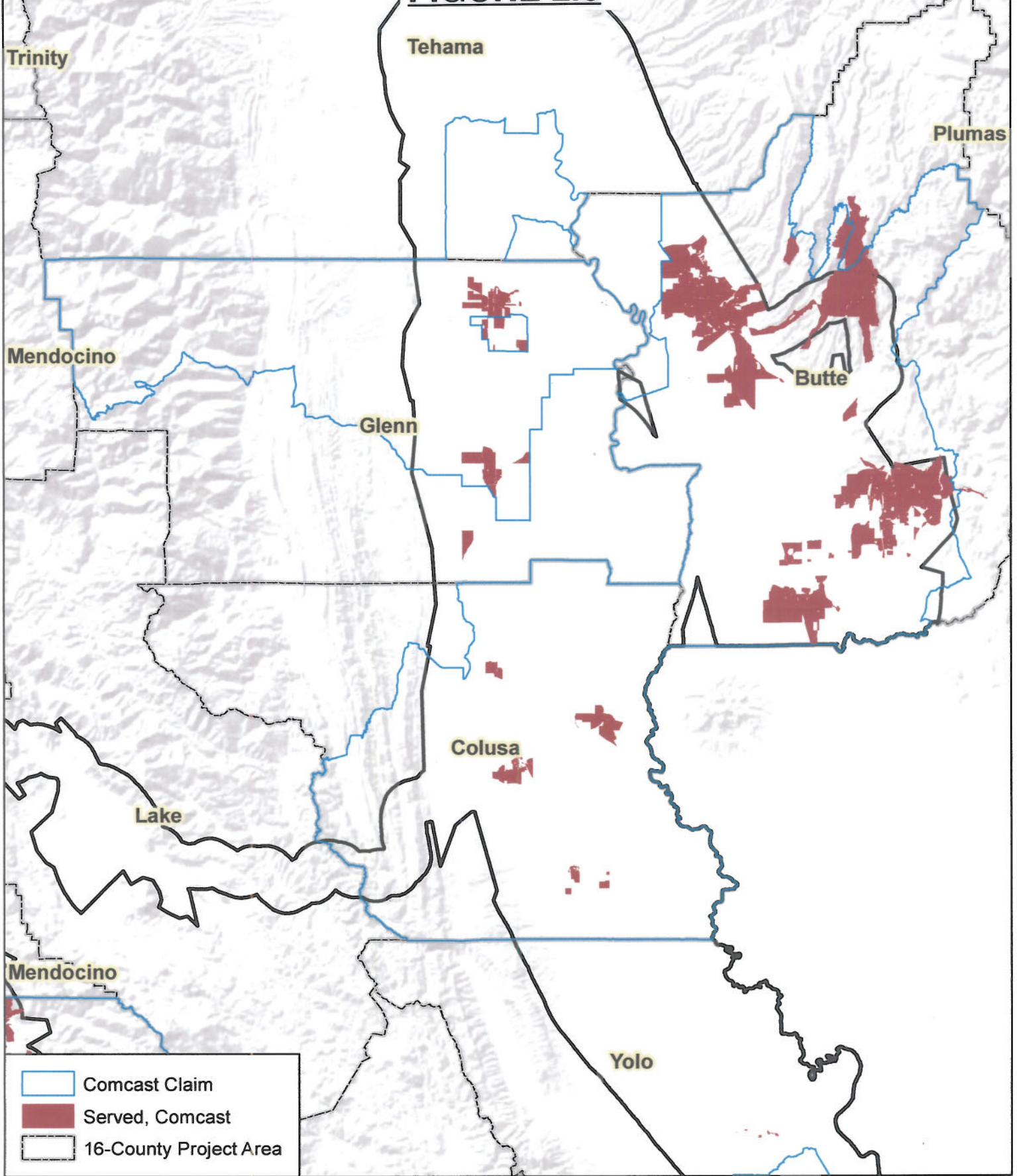
Source: County Business Patterns, U.S. Census Bureau Nonemployer Data

**TABLE 2.0
Northern California: R6 June 2012 Availability**

COUNTY	All Households (2010 Census)		Served Households		Underserved Households		Unserved Households		Satellite Households	
	Number	Percent	Number	Percent	Number	Percent	Number	Percent	Number	Percent
CALIFORNIA	12,577,498	96.30%	12,107,765	96.30%	344,913	2.70%	124,820	1.00%	65,444	
REDWOOD COAST CONNECT										
DEL NORTE	9,907	90.90%	9,008	90.90%	198	2.00%	701	7.01%	157	
HUMBOLDT	56,031	48.40%	27,107	48.40%	24,808	44.28%	4,116	7.30%	1,461	
MENDOCINO	34,945	68.30%	23,860	68.30%	4,729	13.53%	6,356	18.20%	3,249	
TRINITY	6,083	2.40%	147	2.40%	3,408	56.02%	2,528	41.60%	732	
Sub-total	106,966	56.21%	60,122	56.21%	33,143	30.98%	13,701	12.81%	5,599	
NORTHEASTERN CALIFORNIA CONNECT										
BUTTE	87,618	87.60%	76,749	87.60%	10,397	11.87%	472	0.50%	1,394	
LASSEN	10,058	11.80%	1,187	11.80%	8,014	79.68%	857	8.50%	131	
MODOC	4,064	11.50%	466	11.50%	1,854	45.62%	1,744	42.90%	172	
PLUMAS	8,977	8.30%	748	8.30%	8,016	89.29%	213	2.40%	448	
SHASTA	70,346	73.20%	51,484	73.20%	18,527	26.34%	335	0.50%	1,053	
SISKIYOU	19,505	55.00%	10,730	55.00%	7,228	37.06%	1,547	7.90%	675	
TEHAMA	23,767	44.10%	10,487	44.10%	13,108	55.15%	172	0.60%	701	
Sub-total	224,335	94.24%	151,851	94.24%	67,144	29.93%	5,340	2.33%	4,574	
UPSTATE CALIFORNIA CONNECT										
COLUSA	7,056	61.60%	4,346	61.60%	2,318	32.85%	392	5.60%	191	
GLENN	9,800	62.70%	6,142	62.70%	3,393	34.62%	265	2.70%	226	
LAKE	26,548	89.40%	23,860	89.40%	2,724	10.26%	94	0.40%	996	
SONOMA	185,825	97.80%	181,675	97.80%	2,031	1.09%	2,119	1.10%	2,415	
Sub-total	229,229	94.24%	216,023	94.24%	10,466	4.57%	2,870	1.25%	3,828	
CONNECTED CAPITAL REGION										
YOLO	70,872	99.00%	70,129	99.00%	618	0.87%	125	0.20%	390	
Sub-total	70,872	98.95%	70,129	98.95%	618	0.87%	125	0.18%	390	
16 COUNTY TOTALS										
Region % of State	5.02%	4.11%	498,125	78.89%	111,371	17.64%	22,036	3.49%	14,391	21.99%

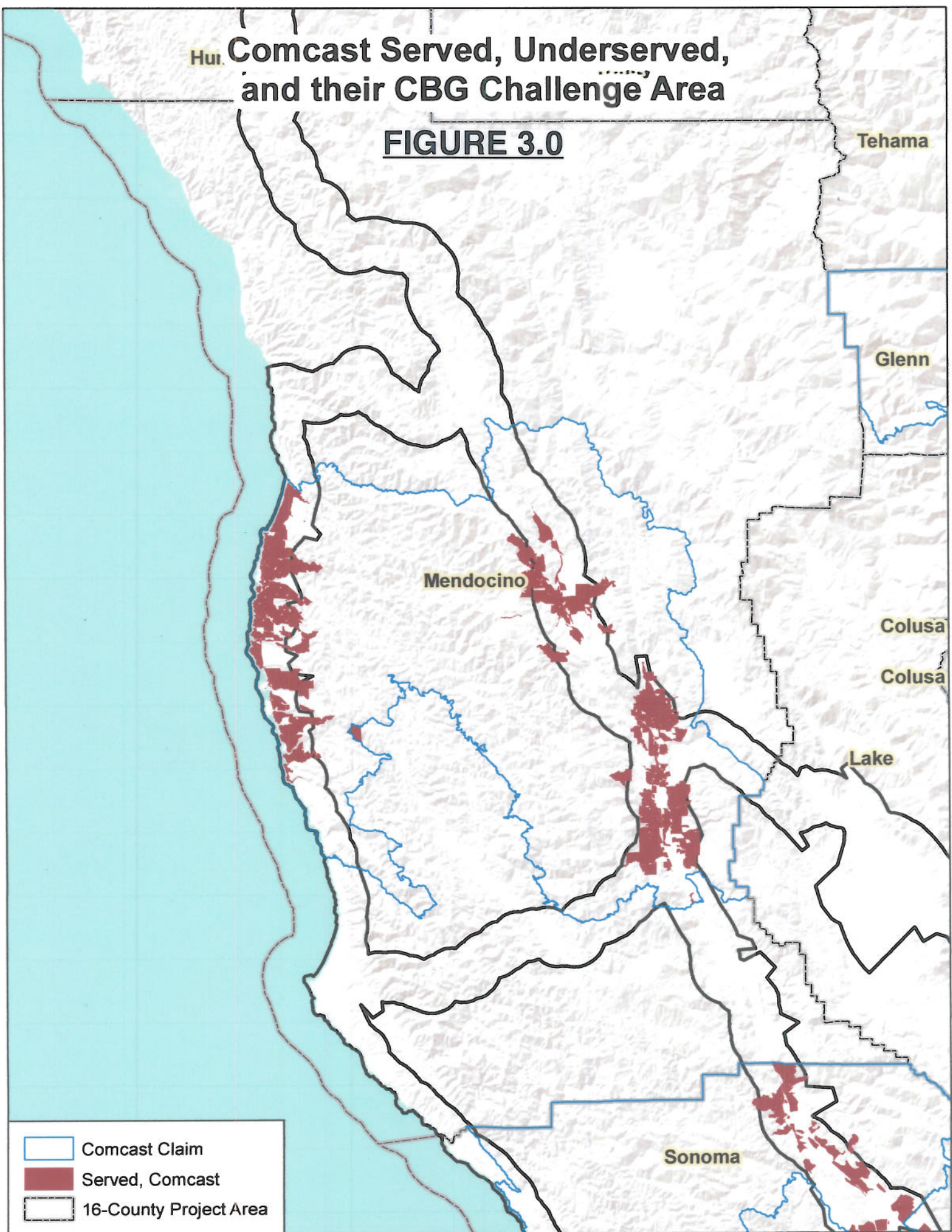
Comcast Served, Underserved, and their CBG Challenge Area




FIGURE 2.0



Hui. **Comcast Served, Underserved, and their CBG Challenge Area**

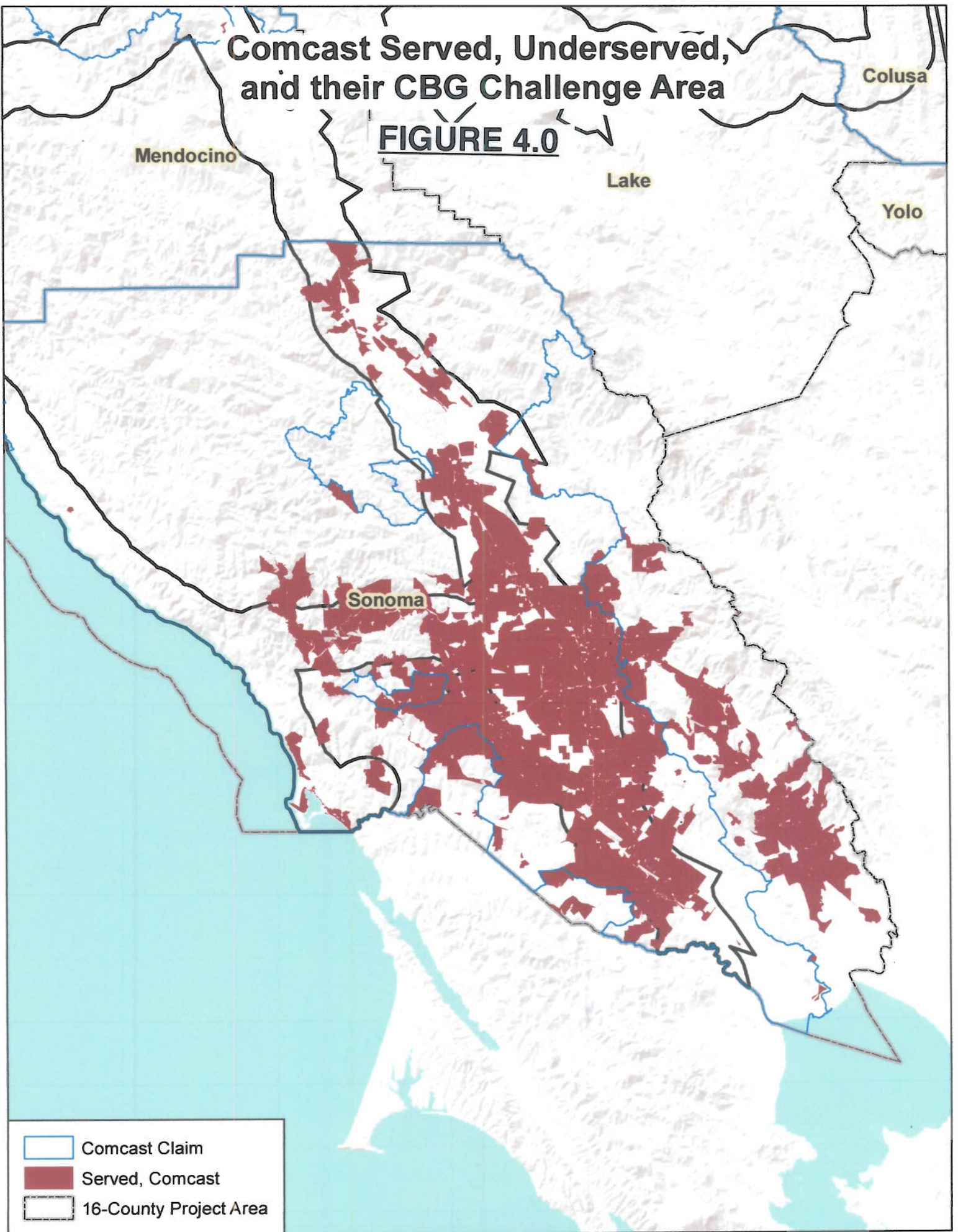
FIGURE 3.0



-  Comcast Claim
-  Served, Comcast
-  16-County Project Area

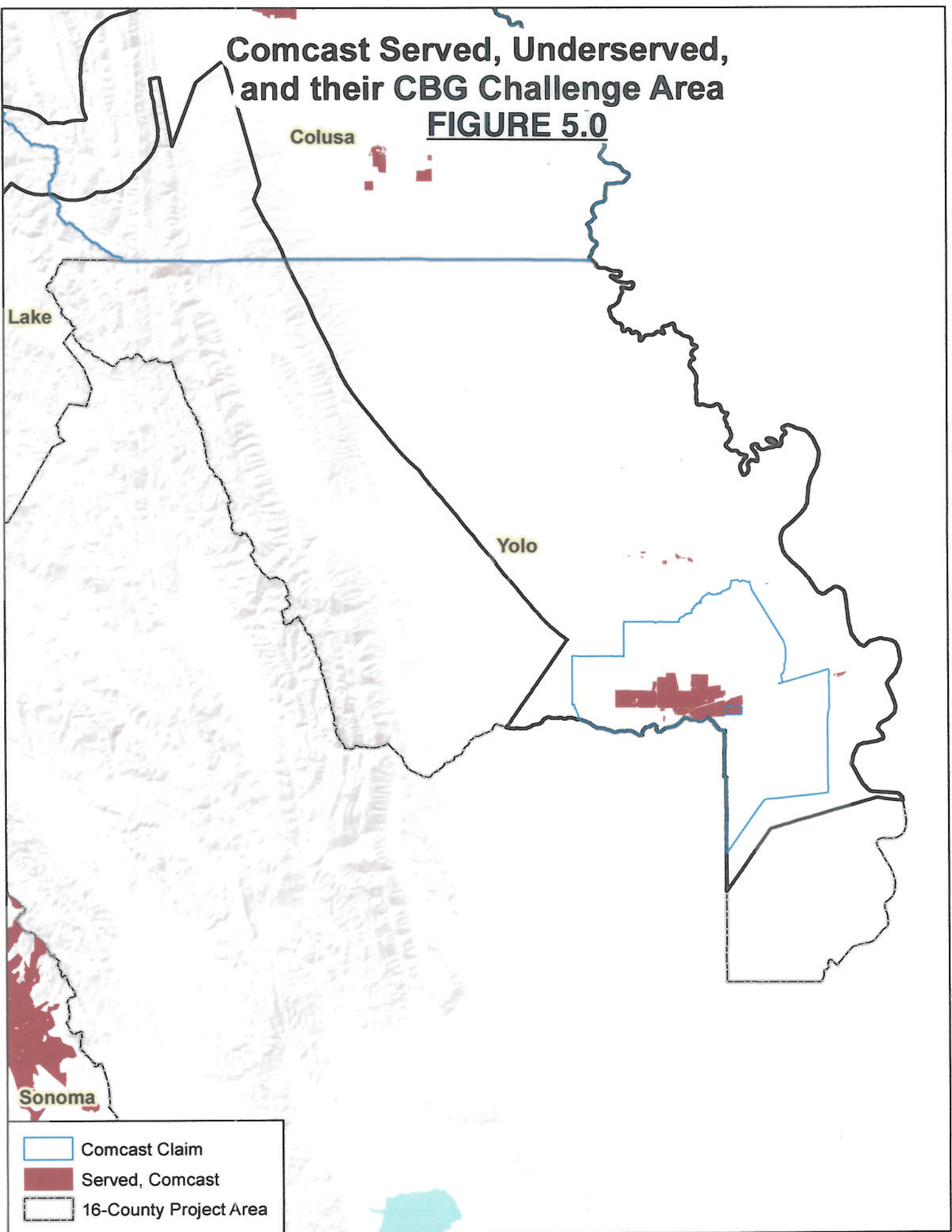
Comcast Served, Underserved, and their CBG Challenge Area

FIGURE 4.0



Comcast Served, Underserved, and their CBG Challenge Area

FIGURE 5.0



Colusa

Lake

Yolo

Sonoma




-  Comcast Claim
-  Served, Comcast
-  16-County Project Area

EXHIBIT #1

COMCAST	Households in GBB Footprint	Households "Served" (50dn & 25up) by Comcast	Percent Served by Comcast	Number of CBGs	Number of CBGs Served 100% by Comcast	Percent
CBGs in Butte County	75,974	69,915	92.0%	180	94	52.2%
CBGs in Colusa County	6,764	4,214	62.3%	19	2	10.5%
CBGs in Glenn County	8,499	5,903	69.5%	19	0	0.0%
CBGs in Mendocino County	25,591	21,961	85.8%	60	10	16.7%
CBGs in Sonoma County	135,715	129,694	95.6%	305	158	51.8%
CBGs in Tehama County	4,524	0	0.0%	9	0	0.0%
CBGs in Yolo County	26,830	26,135	97.4%	45	30	66.7%
Total	283,897	257,822	90.8%	637	294	46.2%

GEOID10	Households in GBB Footprint	Households "Served" (50dn & 25 up) by Comcast	Percent Served by Comcast
060070001021	501	501	100%
060070001022	543	543	100%
060070001023	565	515	91%
060070001031	1336	1320	99%
060070001041	636	636	100%
060070001042	1248	1247	99%
060070001043	449	449	100%
060070002011	422	360	85%
060070002012	314	310	99%
060070002013	262	257	98%
060070002014	735	614	84%
060070002021	606	606	100%
060070002022	386	386	100%
060070002023	394	175	44%
060070002024	394	394	100%
060070003001	315	315	100%
060070003002	725	687	95%
060070003003	230	230	100%
060070003004	463	463	100%
060070004011	682	540	79%
060070004021	1054	1054	100%
060070004022	821	818	99%
060070004023	588	541	92%

060070004024	444	444	100%
060070005011	310	306	99%
060070005012	430	399	93%
060070005013	312	312	100%
060070005014	824	824	100%
060070005021	294	290	99%
060070005022	309	309	100%
060070005023	665	665	100%
060070005024	444	444	100%
060070006011	375	368	98%
060070006012	321	321	100%
060070006013	584	584	100%
060070006031	258	258	100%
060070006032	368	368	100%
060070006033	32	32	100%
060070006034	337	337	100%
060070006041	216	216	100%
060070006042	478	478	100%
060070006043	210	210	100%
060070006044	267	267	100%
060070006045	333	333	100%
060070007001	569	569	100%
060070007002	582	582	100%
060070007003	665	665	100%
060070007004	461	461	100%
060070008001	379	379	100%
060070008002	306	306	100%
060070008003	379	379	100%
060070008004	546	546	100%
060070008005	328	328	100%
060070008006	253	253	100%
060070009011	858	854	99%
060070009031	452	451	99%
060070009032	445	445	100%
060070009033	846	839	99%
060070009034	751	750	99%
060070009041	929	890	96%
060070009042	1232	1232	100%
060070009043	366	366	100%
060070010001	312	312	100%
060070010002	209	209	100%

060070010003	300	300	100%
060070010004	268	268	100%
060070010005	286	286	100%
060070010006	676	676	100%
060070011001	289	289	100%
060070011002	530	421	79%
060070011003	381	369	97%
060070011004	208	202	97%
060070011005	235	235	100%
060070012001	499	499	100%
060070012002	348	348	100%
060070012003	270	186	69%
060070012004	367	366	99%
060070013001	416	412	99%
060070013002	331	329	99%
060070013003	298	286	96%
060070013004	340	340	100%
060070014001	708	678	96%
060070014002	499	118	24%
060070014004	516	232	45%
060070015001	438	340	78%
060070015002	434	373	86%
060070015003	627	621	99%
060070015004	301	219	73%
060070015005	220	33	15%
060070016001	78	2	3%
060070016002	284	98	35%
060070016004	611	559	91%
060070017023	2	0	0%
060070018001	204	204	100%
060070018002	295	295	100%
060070018003	12	12	100%
060070018004	517	500	97%
060070018005	331	331	100%
060070019001	0	0	0%
060070019002	342	342	100%
060070019003	329	329	100%
060070019004	23	23	100%
060070020001	496	494	99%
060070020002	305	305	100%
060070020003	309	309	100%

060070020004	413	396	96%
060070020005	500	500	100%
060070020006	335	335	100%
060070021001	420	420	100%
060070021002	349	349	100%
060070021003	329	329	100%
060070021004	472	471	99%
060070021005	558	558	100%
060070022001	759	753	99%
060070022002	564	438	78%
060070022003	343	343	100%
060070022004	559	495	89%
060070023001	556	552	99%
060070023002	420	420	100%
060070023003	441	441	100%
060070023004	533	484	91%
060070023005	369	124	34%
060070024001	42	0	0%
060070025001	268	268	100%
060070025002	491	491	100%
060070025003	240	240	100%
060070025004	332	248	75%
060070026011	243	64	26%
060070026012	380	375	99%
060070026013	341	341	100%
060070026021	529	507	96%
060070026022	748	748	100%
060070026023	317	317	100%
060070027001	303	293	97%
060070027002	393	377	96%
060070027003	236	236	100%
060070027004	322	261	81%
060070027005	544	533	98%
060070027006	313	311	99%
060070028001	324	324	100%
060070028002	341	341	100%
060070028003	599	599	100%
060070028004	240	240	100%
060070028005	270	270	100%
060070029001	527	527	100%
060070029002	379	379	100%

060070030011	302	301	99%
060070030012	252	252	100%
060070030013	267	267	100%
060070030014	224	224	100%
060070030021	278	242	87%
060070030022	285	278	98%
060070030023	276	276	100%
060070030024	300	300	100%
060070031001	465	440	95%
060070031002	401	370	92%
060070031003	307	289	94%
060070031004	485	485	100%
060070032001	479	391	82%
060070032002	496	64	13%
060070032003	544	450	83%
060070033001	516	135	26%
060070033003	692	266	38%
060070034001	477	453	95%
060070034002	546	420	77%
060070035011	306	236	77%
060070035012	333	333	100%
060070035013	266	265	99%
060070035014	240	239	99%
060070035021	378	282	75%
060070035022	384	376	98%
060070035023	364	364	100%
060070035024	383	382	99%
060070036001	272	259	95%
060070036002	374	371	99%
060070036003	519	20	4%
060070037001	504	473	94%
060070037002	335	132	39%
060070037003	442	442	100%
060070037004	369	369	100%
060110001001	214	0	0%
060110001002	312	5	2%
060110001003	665	281	42%
060110001004	391	132	34%
060110002001	439	433	99%
060110002002	368	258	70%
060110002003	393	393	100%

060110002004	321	321	100%
060110002005	309	278	90%
060110003001	219	72	33%
060110003002	451	155	34%
060110003003	459	203	44%
060110003004	562	431	77%
060110004001	322	103	32%
060110004002	353	258	73%
060110005001	237	158	67%
060110005002	238	231	97%
060110005003	272	267	98%
060110005004	239	235	98%
060210101001	809	741	92%
060210101002	966	931	96%
060210101003	640	537	84%
060210101004	449	433	96%
060210102001	445	240	54%
060210102002	675	203	30%
060210102003	225	3	1%
060210103002	337	43	13%
060210103003	163	0	0%
060210104001	517	499	97%
060210104002	607	593	98%
060210104003	394	389	99%
060210104004	299	215	72%
060210104005	411	403	98%
060210104006	264	260	98%
060210104007	247	246	99%
060210105011	510	49	10%
060210105012	219	0	0%
060210105013	322	0	0%
060450103001	312	251	80%
060450103002	780	639	82%
060450103003	265	254	96%
060450103004	336	320	95%
060450104001	253	250	99%
060450104002	273	273	100%
060450104003	354	354	100%
060450104004	552	543	98%
060450105001	466	457	98%
060450105002	309	295	95%

060450105003	512	498	97%
060450105004	451	411	91%
060450106001	289	57	20%
060450106002	737	723	98%
060450106003	427	267	63%
060450106004	405	84	21%
060450107001	265	260	98%
060450107002	523	460	88%
060450107003	382	381	99%
060450107004	288	281	98%
060450107005	316	314	99%
060450107006	350	295	84%
060450107007	265	145	55%
060450108011	220	142	65%
060450108012	525	491	94%
060450108013	637	463	73%
060450108014	681	566	83%
060450109001	129	72	56%
060450109002	235	148	63%
060450109003	825	677	82%
060450109004	340	285	84%
060450110011	703	336	48%
060450110021	295	231	78%
060450110022	173	136	79%
060450110023	514	402	78%
060450110024	325	171	53%
060450110025	989	925	94%
060450113001	608	592	97%
060450113002	1067	1043	98%
060450113003	342	112	33%
060450114001	275	275	100%
060450114002	299	299	100%
060450114003	361	354	98%
060450114004	235	235	100%
060450114005	271	271	100%
060450114006	314	314	100%
060450115001	507	442	87%
060450115002	809	808	99%
060450115003	451	434	96%
060450115004	226	206	91%
060450115005	451	384	85%

060450116001	588	548	93%
060450116002	596	596	100%
060450116003	398	341	86%
060450116004	660	660	100%
060450117001	373	256	69%
060450117002	334	310	93%
060450117003	233	233	100%
060450117004	330	313	95%
060450117005	162	66	41%
060971506011	429	429	100%
060971506012	283	283	100%
060971506013	360	360	100%
060971506014	251	251	100%
060971506021	415	415	100%
060971506022	231	231	100%
060971506023	457	457	100%
060971506024	416	416	100%
060971506031	792	792	100%
060971506032	252	252	100%
060971506033	232	232	100%
060971506034	601	601	100%
060971506035	343	343	100%
060971506036	353	353	100%
060971506071	356	356	100%
060971506072	233	205	88%
060971506073	1213	1212	99%
060971506091	621	596	96%
060971506092	503	449	89%
060971506093	406	406	100%
060971506094	345	343	99%
060971506101	400	400	100%
060971506102	711	711	100%
060971506103	263	263	100%
060971506111	981	980	99%
060971506112	313	313	100%
060971506113	148	140	95%
060971506121	977	977	100%
060971506122	327	275	84%
060971507011	478	478	100%
060971507012	686	686	100%
060971507013	505	505	100%

060971507014	327	327	100%
060971507021	465	365	78%
060971507022	349	349	100%
060971507023	519	513	99%
060971507024	406	404	99%
060971508001	381	381	100%
060971508002	474	474	100%
060971508003	356	356	100%
060971508004	531	531	100%
060971509011	447	447	100%
060971509012	325	325	100%
060971509013	431	431	100%
060971509014	273	273	100%
060971509015	522	488	93%
060971509021	441	437	99%
060971509022	343	343	100%
060971509023	307	307	100%
060971509024	305	305	100%
060971510001	433	409	94%
060971510002	454	454	100%
060971510003	366	365	99%
060971511001	253	251	99%
060971511002	294	294	100%
060971512011	556	548	99%
060971512012	366	363	99%
060971512013	426	332	78%
060971512014	753	619	82%
060971512015	704	700	99%
060971512031	428	387	90%
060971512032	447	447	100%
060971512033	414	408	99%
060971512034	687	670	98%
060971512041	644	626	97%
060971512042	510	493	97%
060971512043	310	301	97%
060971513011	599	593	99%
060971513012	384	384	100%
060971513013	597	594	99%
060971513051	1012	1012	100%
060971513052	219	219	100%
060971513053	605	605	100%

060971513054	435	435	100%
060971513061	187	187	100%
060971513062	352	352	100%
060971513063	394	394	100%
060971513064	626	626	100%
060971513071	617	617	100%
060971513072	354	354	100%
060971513073	446	446	100%
060971513074	453	448	99%
060971513081	283	283	100%
060971513082	758	758	100%
060971513083	279	278	99%
060971513084	211	211	100%
060971513085	531	531	100%
060971513091	111	111	100%
060971513092	886	862	97%
060971513093	583	349	60%
060971513101	267	267	100%
060971513102	494	475	96%
060971513103	467	392	84%
060971513104	226	217	96%
060971513111	450	430	96%
060971513112	536	536	100%
060971513113	683	683	100%
060971513114	348	348	100%
060971513115	323	323	100%
060971514011	1272	1143	90%
060971514012	584	584	100%
060971514013	315	297	94%
060971514021	761	691	91%
060971514022	763	751	98%
060971514023	911	800	88%
060971514024	286	224	78%
060971514025	542	532	98%
060971515021	505	379	75%
060971515022	73	62	85%
060971515023	33	31	94%
060971515042	84	84	100%
060971517001	18	18	100%
060971517005	46	46	100%
060971518001	504	504	100%

060971518003	379	379	100%
060971518004	663	662	99%
060971518005	276	276	100%
060971519001	256	256	100%
060971519002	281	281	100%
060971519003	328	328	100%
060971519004	462	462	100%
060971520001	534	534	100%
060971520002	446	446	100%
060971521001	344	343	99%
060971521002	295	295	100%
060971521003	382	382	100%
060971522011	423	417	99%
060971522012	462	462	100%
060971522013	480	480	100%
060971522014	363	363	100%
060971522031	359	359	100%
060971522032	404	404	100%
060971522033	536	536	100%
060971522034	535	535	100%
060971523001	589	476	81%
060971523002	413	401	97%
060971523003	568	552	97%
060971523004	315	315	100%
060971524001	915	914	99%
060971524002	188	188	100%
060971524003	811	734	91%
060971524004	815	808	99%
060971524005	172	172	100%
060971527011	320	316	99%
060971527012	325	309	95%
060971527013	386	386	100%
060971527014	357	357	100%
060971527015	529	529	100%
060971527021	97	43	44%
060971527022	519	518	99%
060971527023	316	316	100%
060971527024	781	698	89%
060971527025	195	195	100%
060971528011	522	518	99%
060971528012	450	450	100%

060971528013	409	408	99%
060971528014	209	209	100%
060971528015	381	381	100%
060971528021	483	483	100%
060971528022	873	873	100%
060971528023	387	387	100%
060971528024	549	549	100%
060971528025	453	453	100%
060971529031	309	304	98%
060971529032	701	701	100%
060971529033	234	234	100%
060971529034	276	276	100%
060971529041	738	687	93%
060971529042	267	267	100%
060971529043	482	468	97%
060971529044	403	402	99%
060971529051	552	457	83%
060971529052	524	518	99%
060971529053	463	463	100%
060971529061	1220	1142	94%
060971529062	698	688	99%
060971530011	724	724	100%
060971530012	627	627	100%
060971530013	1075	1038	97%
060971530021	577	577	100%
060971530022	496	496	100%
060971530023	271	271	100%
060971530024	382	382	100%
060971530025	271	271	100%
060971530031	355	355	100%
060971530032	325	325	100%
060971530033	650	650	100%
060971530034	616	584	95%
060971530051	360	358	99%
060971530052	268	258	96%
060971530053	555	492	89%
060971530054	326	315	97%
060971530055	586	585	99%
060971530056	314	314	100%
060971530061	332	332	100%
060971530062	317	317	100%

060971530063	539	539	100%
060971530064	828	827	99%
060971530065	328	328	100%
060971530066	455	440	97%
060971531021	326	326	100%
060971531022	425	393	92%
060971531023	362	362	100%
060971531024	263	263	100%
060971531031	636	622	98%
060971531032	392	392	100%
060971531033	298	298	100%
060971531041	574	567	99%
060971531042	244	244	100%
060971531043	338	338	100%
060971532001	290	290	100%
060971532002	290	167	58%
060971532003	479	479	100%
060971532004	1072	1072	100%
060971533001	1139	1086	95%
060971533002	328	323	98%
060971533003	506	362	72%
060971533004	1537	1535	99%
060971534011	313	313	100%
060971534012	282	252	89%
060971534013	233	232	99%
060971534014	432	432	100%
060971534015	394	394	100%
060971534016	501	494	99%
060971534031	479	470	98%
060971534032	498	467	94%
060971534033	322	322	100%
060971534034	320	318	99%
060971534041	366	366	100%
060971534042	548	419	76%
060971534043	307	296	96%
060971534044	499	499	100%
060971535011	378	375	99%
060971535012	259	259	100%
060971535013	299	287	96%
060971535014	477	464	97%
060971536001	302	282	93%

060971536002	61	61	100%
060971536003	363	363	100%
060971536005	92	92	100%
060971537031	531	468	88%
060971537032	397	189	48%
060971537033	296	295	99%
060971537034	123	40	33%
060971537035	286	267	93%
060971537041	280	280	100%
060971537042	288	285	99%
060971537043	317	317	100%
060971537044	199	197	99%
060971537051	158	155	98%
060971537052	351	342	97%
060971537053	489	462	94%
060971537054	454	450	99%
060971537061	140	120	86%
060971537062	512	509	99%
060971537063	607	380	63%
060971537064	233	155	67%
060971538011	351	334	95%
060971538012	1670	1609	96%
060971538013	301	301	100%
060971538014	627	627	100%
060971538041	588	588	100%
060971538042	510	510	100%
060971538061	284	284	100%
060971538062	410	400	98%
060971538063	529	522	99%
060971538071	354	354	100%
060971538072	886	799	90%
060971538081	664	460	69%
060971538082	298	298	100%
060971538083	595	581	98%
060971538091	487	480	99%
060971538092	604	604	100%
060971538093	389	368	95%
060971539011	312	299	96%
060971539012	566	566	100%
060971539013	800	794	99%
060971539014	284	279	98%

060971539021	533	531	99%
060971539022	254	254	100%
060971539023	371	371	100%
060971539024	314	314	100%
060971539031	400	396	99%
060971539032	386	386	100%
060971539033	297	291	98%
060971539034	492	492	100%
060971540002	126	48	38%
060971540003	444	426	96%
060971541001	220	111	50%
060971541002	510	232	45%
060971541003	305	150	49%
060971542011	507	489	96%
060971542012	311	266	86%
060971542013	214	174	81%
060971542014	385	385	100%
060971542021	1582	1552	98%
060971542022	267	255	96%
060971542023	275	275	100%
060971543022	1	0	0%
060971543023	104	86	83%
060971543024	461	234	51%
060971543031	422	0	0%
060971543041	23	0	0%
060971543042	156	66	42%
060971543043	441	283	64%
061030010002	998	0	0%
061030010003	407	0	0%
061030010004	509	0	0%
061030011001	395	0	0%
061030011002	315	0	0%
061030011003	380	0	0%
061030011004	763	0	0%
061030011005	243	0	0%
061030011006	514	0	0%
061130104012	1001	826	83%
061130105011	828	257	31%
061130105012	321	48	15%
061130105051	355	16	5%
061130105052	49	0	0%

061130105053	1357	1339	99%
061130105081	1032	866	84%
061130105091	599	599	100%
061130105092	769	766	99%
061130105101	281	275	98%
061130105102	839	839	100%
061130105103	494	494	100%
061130105104	417	417	100%
061130105111	399	399	100%
061130105112	857	857	100%
061130105121	642	642	100%
061130105122	521	521	100%
061130105131	543	543	100%
061130105132	631	532	84%
061130106021	1099	1099	100%
061130106022	545	545	100%
061130106023	386	386	100%
061130106024	427	427	100%
061130106051	780	778	99%
061130106052	427	427	100%
061130106061	620	620	100%
061130106062	597	597	100%
061130106063	331	331	100%
061130106064	1077	1077	100%
061130106065	286	286	100%
061130106071	608	579	95%
061130106072	303	303	100%
061130106073	709	702	99%
061130106081	496	480	97%
061130106082	1092	1038	95%
061130106083	320	320	100%
061130107011	363	363	100%
061130107012	941	941	100%
061130107013	372	372	100%
061130107014	434	434	100%
061130107031	200	200	100%
061130107032	703	703	100%
061130107033	419	419	100%
061130107034	431	431	100%
061130107041	929	929	100%

EXHIBIT #2

On Mar 31, 2013, at 11:37 AM, Charles Reinhart <chasr123@gmail.com> wrote:

Members,

If you are currently served by Comcast for your internet access or are within the narrow confines of "high speed" DSL service from MCN or AT&T consider yourself lucky. With your self interest met, you may mistakenly believe you have no dog in the fight for rural broadband access but you would be wrong. Local efforts being made to bring broadband access to unserved areas of our communities will bring improvements to how all of us currently conduct our businesses, receive our news/information, and entertainment. These efforts are being stymied at this moment by three corporate internet providers, Comcast, Verizon and AT&T, who are or will challenge the proposals of the Broadband Alliance of Mendocino County and a multi agency effort to create a fiber optic "middle mile" backbone along State Route 1 in Mendocino and Sonoma counties. The Route 1 Corridor Project <<http://www.mendocinobroadband.org/route-1-corridor-project/>> " (R1CP)" is a key component of a larger 16 county Golden Bear Broadband proposal to close the performance gap between rural and urban internet access.

Comcast is challenging this effort by using their obviously flawed data to contend that they currently provide wider coverage than the facts support. The tactic to shut down the "Route 1 Corridor Project" with demonstrably false data is just a local example of a flawed assumption: that the most important function of Comcast's business is not to provide a critical public service, but to maximize profits for it's shareholders.

"Urgent call to action:"

With your input it is possible to refute the claimed service area of Comcast by finding yourself on the attached maps and asserting if broadband service is "not" available to you. Please do so now by reply email.

Additional information is available at: <http://www.mendocinobroadband.org>

Maps:

<http://www.iqshgrin.com/images/Broadband/ComcastAlbion.pdf>
<http://www.iqshgrin.com/images/Broadband/MendocinoStreets2.pdf>

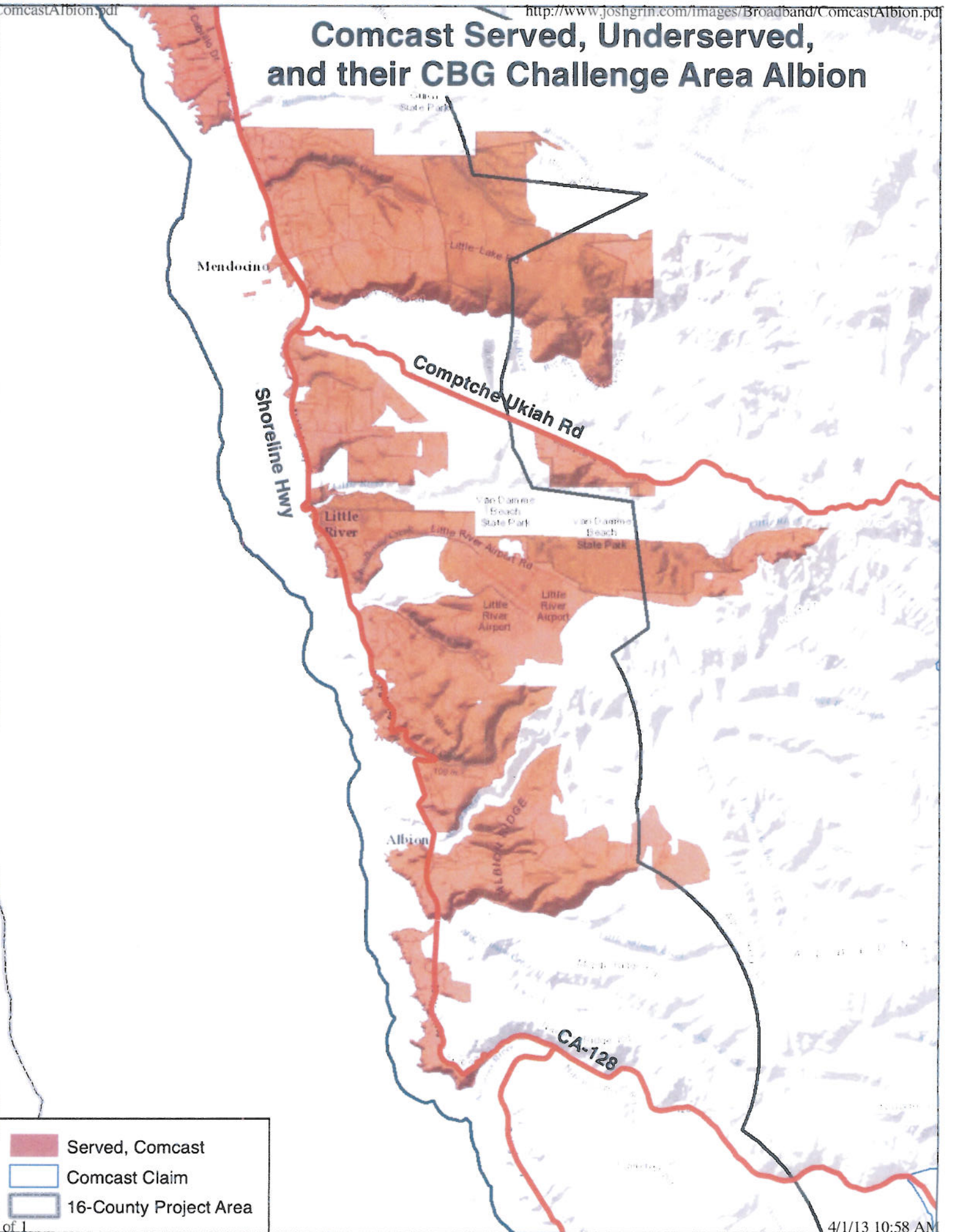
Big shifts happening in education:

<http://www.iqshgrin.com/images/Broadband/DigitalDivide.pdf>

--

Charles Reinhart
Joshua Grindle Inn
Mendocino, CA

Comcast Served, Underserved, and their CBG Challenge Area Albion



- Served, Comcast
- Comcast Claim
- 16-County Project Area

From: rmcoppock@comcast.net
Subject: **Re: URGENT - Comcast challenge to Golden Bear/Route 1 Corridor application**
Date: March 29, 2013 9:34:05 PM PDT
To: Jim Moorehead <jlm@mcn.org>
Cc: Charles Reinhart <charles@joshgrin.com>, Brian Churm <brian.churm@gmail.com>, Tom West <twest@cenic.org>, Mitch Drake <m.drake1157@gmail.com>, Rod Lorimer <rodric@mcn.org>, Rifaat Dayem <rdayem@basicisp.net>, Shirley Freriks <sfreriks@mcn.org>, Steve Drake <sdrake@mcn.org>, Ted Williams <ted@ted.net>

You are right about south of Albion Ridge Rd along HW 1. No service west of highway. No service on G Rd, either side of Ridge Rd. Can't tell from map if that's what the thing shows.

Bob C

From: Donna Feiner <dfeiner@mcn.org>
Subject: **Lack of Comcast service**
Date: March 31, 2013 12:09:41 PM PDT
To: twest@cenic.org, jlm@mcn.org

Hi there,
I live at 3451 Albion Ridge E Road and Comcast does NOT come to my home. They serve my neighbor to the south but will not serve me or the other many households on my road. I have tried to get service to my home but they quote prices of tens of thousands of dollars! The map shows that I have access but it is not at all accurate. Please help us to get internet service it is critical.
Thanks
Donna Feiner

From: "Gina O'Feral" <ginaoferal@gmail.com>
Subject:
Date: March 31, 2013 2:41:41 PM PDT
To: jlm@mcn.org, twest@cenic.org, Donna Feiner <dfeiner@mcn.org>

Hi, I'm Gina O'Feral. My home and property are at 3501 E road north. 1200 ft from Albion ridge road, and 600 ft from where Comcast service ends on E road. Needless to say, I am not served, and very much would like to be! When I look on the map, unfortunately as much as I can tell comparing it to my house on google earth, I am not within the pink area where they are claiming they provide service, so I can't hold THAT against them. But if there is anything I COULD do to further our cause, I'd be interested!

Thanks,

Gina

From: Roberta Mcn <roberta@mcn.org>
Subject: **Comcast**
Date: March 31, 2013 3:16:40 PM PDT
To: "twest@cenic.org" <twest@cenic.org>, "jim@mcn.org" <jim@mcn.org>
Cc: Shirley Freriks <sfreriks@mcn.org>

Dear Jim & Tom,

This is to inform you that we not only don't have Comcast coverage at 32101 Albion Ridge Road, but all the times I have called Comcast and asked for coverage they have said an emphatic "NO".

Thanks for your assistance.

Sincerely,
Roberta & David Belson

Sent from my iPad

From: Schoen Marc <marcschoen@wildblue.net>
Subject: **Comcast Service Area Inaccuracy**
Date: March 31, 2013 3:32:45 PM PDT
To: jlm@mcn.org, twest@cenic.org

CPUC,

I live at 2490 Nonella Lane, which is West of HWY 1 and South of Albion Ridge Road. I live in a group of about 20 homes.

We do not have Comcast Service. The service map which I have reviewed shows a service area in which I live along the coast and the map is incorrect.

I have called Comcast in the past to provide service and they ignored my request. Our only internet provider is via satellite which is not at broadband speed.

Marc Schoen

From: "Larry & Candy Cadd" <cadd@vbn.com>
Subject: **Re: Comcast Service Area Inaccuracy**
Date: March 31, 2013 4:20:03 PM PDT
To: <jlm@mcn.org>, <twest@cenic.org>

CPUC,

We live at 2404 Nonella Lane, Albion, Ca. The location is West of HWY 1 and South of Albion Ridge Road. There are about 20 homes in the immediate area, including Pacific Reefs Subdivision.

We could not sign up with Comcast due to lack of coverage at our home. I am unaware of any Comcast Service to this area west of SR 1. The Comcast service map which I have reviewed indicates available coverage to this area, but service has been denied.

We currently have satellite internet coverage at much less than broadband speed.

Larry & Candy Cadd

From: Rainbird <rainbird@mcn.org>
Subject: **Albion needs broadband**
Date: March 31, 2013 4:01:44 PM PDT
To: twest@cenic.org, jlm@mcn.org, sfreriks@mcn.org

I live at 31602 Albion Ridge Road, Albion CA 95410. I have no access to broadband internet due to being outside the ATT/Comcast coverage area. My only options for internet connectivity are dial-up, or US Cellular mobile hotspot or satellite. Although the latter are faster than dialup they are much more expensive than cable, with limited data caps and lags that prevent streaming, interactive video, and various business applications.

We are tired of being treated like second class citizens, relegated to the horse and buggy era of the internet. The majority of residents of Albion Ridge are outside the Comcast coverage area. We have waited long enough and need cable internet NOW!

RB Baron

From: Brenda Hall <beano1001@yahoo.com>
Subject: **Comcast Service Inaccuracy**
Date: March 31, 2013 4:30:23 PM PDT
To: "jlm@mcn.org" <jlm@mcn.org>, "twest@cenic.org" <twest@cenic.org>
Reply-To: Brenda Hall <beano1001@yahoo.com>

Hello:

We live at 34225 Pacific Reefs Road, which is West of HWY 1 and South of Albion Ridge Road. I live in a group of about 17 homes.

We do not have Comcast Service. The service map which I have reviewed shows a service area in which I live along the coast and the map is incorrect.

I have called Comcast in the past to provide service and they ignored my request. Our only internet provider is via satellite which is not at broadband speed. This situation and the map need to be corrected.

Thanks you,

Brenda Hall
John Hall

From: Judy Katz <jkqueen@aol.com>
Subject: **Broadband service**
Date: March 31, 2013 5:01:50 PM PDT
To: "twest@cenic.org" <twest@cenic.org>

I understand that you are the person that might be influencing the mapping of Comcast broadband service. I have had nothing but dial-up available to me at Pacific reefs for 22 years. I am most interested in doing whatever I can to see that we have broadband service. Please advise me how I can help. Thank you. Judy Katz

From: Keith Middlesworth <kmiddlesworth@mcn.org>
Subject: **Comcast Maps are false**
Date: March 31, 2013 8:34:39 PM PDT
To: twest@cenic.org

We live at 34400 Pacific Reefs Road, which is West of HWY 1 and South of Albion Ridge Road. I live in a group of about 17 homes.

We do not have Comcast Service. The service map which I have reviewed shows a service area in which I live along the coast and the map is incorrect.

I have called Comcast in the past to provide service and they ignored my request. Our only internet provider is via satellite which is not at broadband speed. This situation and the map need to be corrected.

Thank you,

Keith and Deanna Middlesworth

From: "Chris Skyhawk" <hawkwork@mcn.org>
Subject: **Fw: Comcast coverage in Albion**
Date: March 31, 2013 8:55:30 PM PDT
To: <twest@cenic.org>

----- Original Message -----

From: Chris Skyhawk
To: jlm@mcn.org
Sent: Sunday, March 31, 2013 8:53 PM
Subject: Comcast coverage in Albion

Hi Jim- please feel free to send this in to CPUC, I do not see any address to send it to so I trust you folks will get it to its proper destination
I will also send this to Jim M and Shirley

My name is Chris Skyhawk. I live with my family at 28410 Albion Ridge Rd. We are near the 2.25 mile marker on Albion Ridge Rd. and Comcast does not come up the ridge to us or anyone in our neighborhood.

Thank you

Sincerely, Chris Skyhawk
PO Box 127
Albion CA 95410
707-937-4295

From: Betsy Pene <pene@salk.edu>
Subject: **Broadband Service**
Date: April 1, 2013 9:34:52 AM PDT
To: "jlm@mcn.org" <jlm@mcn.org>, "twest@cenic.org" <twest@cenic.org>

California Public Utilities Commission

I live at 34250 Pacific Reefs Road in Albion, CA which is West of HWY 1 and South of Albion Ridge Road. We have long awaited broadband service from any available provider and have made numerous requests for the infrastructure to be extended to our area south of where it is currently.

We do not have Comcast Service. The service map shows a service area in along the coast but **the map is incorrect.**

I have called Comcast in the past to provide service and they ignored my request.

Elizabeth C. Pene

From: "steve drake" <sdrake@mcn.org>
Subject: **Re: URGENT - Comcast challenge to Golden Bear/Route 1 Corridor application**
Date: April 1, 2013 12:30:31 AM PDT
To: "Jim Moorehead" <jlm@mcn.org>, "Rod Lorimer" <rodric@mcn.org>, "Rifaat Dayem" <rdayem@basicisp.net>, "Shirley Freriks" <sfreriks@mcn.org>, "Robert M Coppock" <rmcoppock@comcast.net>, "Ted Williams" <ted@ted.net>
Cc: "Charles Reinhart" <charles@joshgrin.com>, "Brian Churm" <brian.churm@gmail.com>, "Tom West" <twest@cenic.org>, "Mitch Drake" <m.drake1157@gmail.com>

Jim,

As you remember, we assembled a map showing served and unserved residences in this same area. The shaded Comcast-served area for Albion would be better represented by a single marker line along the road, since in only a few cases do they extend service branches any distance from the buried trunk line. I know of one case where a former State Energy Commissioner couldn't get them to extend 100 yds. down his driveway despite a junction box located where it intersects @ 32281 Albion Ridge Rd.

The extent of their service shown up Albion Ridge is more or less correct. It's the breadth that is fictional.

I was puzzled by the apparent dead zone depicted along Comptche Ukiah Rd. They claim service away from the road, but not adjacent to it. That doesn't seem likely. I know of one 7Mb customer in the shaded zone shown touching the road a few miles out. It happens to be where the cable changes from overhead to burial. I think the broad shading derives from only few customers.

This is the best I can muster at this late hour.

Thanks for your perseverance,

Steve

From: Michael Garrison <mfgarrison@hotmail.com>
Subject: **Broadband service**
Date: April 1, 2013 8:16:34 AM PDT
To: "jlm@mcn.org" <jlm@mcn.org>, "twest@cenic.org" <twest@cenic.org>

California Public Utilities Commission

I live at 2000 N. Highway 1 in Albion, CA which is West of HWY 1 and South of Albion Ridge Road. We have long awaited broadband service from any available provider and have made numerous requests for the infrastructure to be extended to our area south of where it is currently.

We do not have Comcast Service. The service map shows a service area in along the coast but **the map is incorrect.**

I have called Comcast in the past to provide service and they ignored my request.

NCRMMI is being collaboratively developed by the Upstate California Connect Consortium, the Northeast California Connect Consortium, and the Broadband Alliance of Mendocino County with generous funding from the California Advanced Services Fund (CASF) Broadband Consortia Grant program.

The Route 1 Corridor Project (R1CP) is a factorable sub-project of the NCRMMI which would provide a fiber middle-mile backbone primarily along State Route 1 in both Mendocino and Sonoma counties.

Michael F Garrison

From: Howard Pines <hpines52@hotmail.com>
Subject: **COMCAST SERVICE REQUEST**
Date: March 31, 2013 5:42:44 PM PDT
To: "jlm@mcn.org" <jlm@mcn.org>, "twest@cenic.org" <twest@cenic.org>

Hello:

We live at 2751 Seaside Court, Albion, which is West of HWY 1 and South of Albion Ridge Road. I live in a group of about 17 homes.

We do not have Comcast Service. The service map which I have reviewed shows a service area in which I live along the coast and the map is incorrect.

I have called Comcast in the past to provide service and they ignored my request. Our only internet provider is via satellite which is not at broadband speed. This situation and the map need to be corrected.

Thank you,

Howard and Ying Pines

From: Jim Moorehead <jlm@mcn.org>
Subject: **More on Comcast**
Date: April 1, 2013 7:52:48 AM PDT
To: Tom West <twest@cenic.org>
Cc: Steve Sharpe <Steve.Sharpe@sonoma-county.org>, Michael Nicholls <mcnicholls@me.com>, Brian Churm <brian.churm@gmail.com>, Trish Steel <AdminCoordinator@mendocinobroadband.org>, Mitch Drake <m.drake1157@gmail.com>, Cathy Emerson <cmemerson@csuchico.edu>
2 Attachments, 1.1 MB

Good Morning Tom,

I found two more emails that should be of interest to you. I realize you're up against a deadline, but here they are.

First email -

Tina Nerat, the RCC consultant arranged a meeting for our old MCBA coastal group with Paul Gibson, *Comcast Cable Area VP, North Bay Area, Western Division*. The meeting was on Feb 29, 2008 at the Mendocino Middle School Library. We brought the large parcel maps that our team had marked up showing extent of Comcast service on each road and all the unserved parcels beyond those points. When we rolled out the maps on a big table, Gibson's reaction was of seemingly great interest, asking a number of questions, and explaining potential technology challenges. At end of meeting, he asked for copies of the maps be sent to him in San Rafael. We all departed the meeting with sense of a breakthrough. Nope!!! We sent Paul copies of the maps and never heard from him again. Tina, Shirley Freriks (Pres. of MCBA) and I all tried phoning and emailing him. Never a response.

Second email -

On a call last summer with Tina Nerat, we agreed that Tina should try and approach Rachelle Chong who was then still at Comcast. Tina and Rachelle had met several times at conferences, etc. and we thought that she might be able to get some face time with Rachelle. The request was to determine Comcast interest in leasing/buying dark fiber on the R1CP to solve their middle mile problem on the coast, asking Rachelle to make the introductions. I don't recall any meeting ever taking place and now Rachelle is a blogger.

The map showing my neighborhood attached to this second email, which was also sent to Paul Gibson, appears in the Appendix of the first RCC Broadband report (Jan '09) page 185. Tina was one of the report's authors. These 19 homes are now 22 homes - all Unserved, and only about 1/4 mile from end of Comcast fiber. The Comcast-provided map shows that they are served, and the FCC data base says that they can receive 100Mbps+ service. Pure fiction.

Jim

Jim Moorehead
Chair, Executive Committee

Broadband Alliance
of Mendocino County
<http://www.mendocinobroadband.org/>

Begin forwarded message:

From: "Shirley Freriks" <stfreriks@mcn.org>
Subject: FW: 29th meeting with ComCast
Date: February 20, 2008 10:33:00 AM PST
To: "Ted" <ted@ted.net>, "Jim Moorehead" <jlm@mcn.org>, "Rod Lorimer" <rodric@mcn.org>

Hi - Tina has just confirmed a meeting with ComCast for 10 am Friday morning the 29th of February. She said only a few of us are appropriate to talk with them rather than the whole team. The four of us each hold an important piece at this point I think. Can you attend? Location to be announced...

Her agenda suggestion is:

A first quick thought at agenda items:

- Introductions (all) 5 min
- RCC and how it fits in with Mendo coast (Tina Nerat) 5 min
- Comcast overview – history with Adelpia and plans (Paul Gibson) 5 min
- Overview of Coast Connect group activities (Shirley Freriks) 10 min
- Opportunities for expansion beyond current Comcast footprint (all) 30 min
- Other? I ran dry here.....
- Actions (all) 5 min

I added the important question of how do we get down the side roads where there are a significant number of people? Someone suggested the other day at our meeting that we see if they can give multiple nodes at the end of each road for hookups. We can probe them anyway. This is where Ted's infrastructure knowledge would be really important to have around the table.

I hope you can make it. Thanks for letting me know your thoughts.

Peace be with you.
Shirley Freriks

-----Original Message-----

From: Tina Nerat [mailto:tina@neratech.net]
Sent: Tuesday, February 19, 2008 5:20 PM
To: 'Shirley Freriks'
Subject: 29th

Are you available at 10am on the 29th? I think I have it set up with Comcast. Catherine Stone will get us a room in one of the school libraries so we're on neutral turf and not in the Comcast office and not in the more urban area of Ft Bragg. I think we need to keep this group SMALL (please) for the initial meeting. You, Rod, Jim, and just a few others of the folks you've been working with who are also near Comcast turf. Let's collaborate on agenda and who will be there. Tina

Begin forwarded message:

From: Jim Moorehead <jim@mcn.org>
Subject: Comcast & Route 1 Corridor Project
Date: June 16, 2012 11:44:42 AM PDT
To: Tina Nerat <tina@neratech.net>
Cc: Greg Jirak <greg@fogeatersinc.com>, Brian Churm <brian.churm@gmail.com>

Tina,
 I know you're off for the next week and this does not need your immediate attention, but wanted to share it with you and Greg. Amazing how the time passes - I wrote the attached letter to you nearly five years ago!

My neighborhood is an example of where Comcast could extend it's service a short distance and solve this particular problem. When we met with Paul Gibson in the spring of 2008, you'll recall that he seemed very interested in our MCBA maps and asked for copies. Alas we never got anywhere with him or Comcast at the time. My thinking on why he was interested is that, that unlike AT&T who has a wireline to practically every residence, he doesn't really know where the demand is. The MCBA maps showed him where that demand is.

So going forward, when you talk to Rachelle, I'd suggest emphasizing the value proposition BAMC can offer to Comcast on identifying the demand in Mendocino county. We have the mapping and can get the 'boots on the ground' to show where and how much demand. If Comcast takes some of the Highway One fiber, BAMC stands ready to assist them in mapping out their network by doing on a larger scale the work I did for my neighborhood.

Jim
 Jim Moorehead
 Chair, Executive Committee
**Broadband Alliance
 of Mendocino County**
<http://www.mendocinobroadband.org/>



Mendocino, CA 95460

Prepared by

Jim Moorehead
 41051 Little Lake Rd
 Mendocino, CA
 jim@mcn.org
 707 937 4828
 11.13.07

A - End of Comcast service at Puder driveway - 3.8 mi
 B - Approximate end of AT&T DSL service at 3-mile Y
 C - Outlaw Springs Road - 4 Mile Marker

Neighborhood just east of broadband service (Little Lake Rd. addresses):

- | | |
|-----------------------|-----------------------------|
| 1 Moorehead - 41051 | 11 Gardner - 41025 |
| 2 Seichau - 41081 | 12 Edmundson - 41023 |
| 3 Reed - 41071 | 13 Edmundson tenant - 41021 |
| 4 Mahon - 41101 | 14 Julius - 41011 |
| 5 Rose - 41111 | 15 Chandler - 41015 |
| 6 Green - 41045 | 16 Comen - 41040 |
| 7 Christensen - 41061 | 17 41401 |
| 8 Heiss - 41041 | 18 41425 |
| 9 Martes - 41031 | 19 Puehlmann - 40530 |
| 10 Keller - 41035 | |



↓
 Tina ltr.rtf (1.3 KB)